

Issue 43
July—August 2023



West Row Parish Echo



**Our deadline for
issue 44**

September/October 2023 is : 15th August 2023

Please email

Helen Webber at helen.webber60@gmail.com

Contacts for The Parish Echo

Position	Name	Email	Contact
Editor	Peter Rolfe	peter.rolfe3@btopenworld.com	01638 714073
Compositor	Helen Webber	helen.webber60@gmail.com	01638 712058
Adverts	Carol Bebee	carol_bebbee@hotmail.com	01638 712400



TOWN & COUNTRY CARS

PRIVATE HIRE TAXI

8 PASSENGER SEATS
ALL AIRPORTS COVERED

07379 811373

towncountrycars95@yahoo.com

All major credit/debit cards accepted in the vehicle



www.mobilitysolutionssuffolk.co.uk

MOBILITY
Solutions

tel. 01638 717798

29 James Carter Road, Mildenhall, Suffolk IP28 7DE

**SCOOTERS BOUGHT
& SOLD, NEW
OR USED**

**BEST PRICES
AVAILABLE**

*"First we listen...
then we help"*



**Tree Works, Garden Maintenance, Fencing and Landscaping
Management of Woodland, Sports Grounds and Recreational Areas**

Site Clearance and Stump Grinding Service

Aerial Drone Surveys Undertaken

Emergency Tree Call Out Service

No Job too Large or too Small



The Joshua Tree

ARBORICULTURAL SPECIALISTS

**Professional, Ethical, Local Company, Fully Qualified and Insured
Free Quotations and Advice.**

To make an appointment call: **01638 597711**

A note from the EDITOR

Dear Reader,

Firstly, I wish to pay tribute to Lynn Morley who sadly passed away a few weeks ago. Lynn was a true asset to the village and initiated many events. Her continuous efforts resulted in the West Row Echo being launched and for many years she compiled the articles submitted for each copy. Her presence will be sorely missed in the many areas of village life she was involved in.

It was pleasing to see many villagers turn out for the Coronation of King Charles III in spite the poor weather conditions.

The History Group's second report about Roman times in and around West Row can be found on page 7 and well worth a read.

Are you looking for an outside interest or hobby? Look at what's on Offer at the Village Hall on page 6 and also at the Bowls Club on page 13. Also you may be interested in helping out or just visiting The Shed - see page 11.

The Parish Council would like your views on certain matters. If you have time, please fill out the questionnaire on page 24 and return it in various ways. Even if you can't complete the whole survey, return it anyway.

Best Wishes,
Peter Rolfe
Editor

Spring Quiz answers.

1. Rebecca 2. The Time Machine 3. Great Expectations 4. Tinker, Tailor, Soldier, Spy 5. Cider with Rosie 6. Billy Liar 7. The Water Babies 8. Nineteen Eighty Four 9. Oliver Twist 10. Of Mice and Men 11. Black Beauty 12. War and Peace 13. Murder on the Orient Express 14. David Copperfield 15. Gigi 16. Frankenstein 17. Death on the Nile 18. Treasure Island 19. Robinson Crusoe 20. Kidnapped

Seven people had all the correct answers and the winner, drawn by lot, was Lucy Rycroft-Smith, Church Road, West Row.

Memory Corner

We would like to add a memory corner with photos from the village to the Parish Echo, they don't have to be from decades ago, many people have expressed an interest in seeing village life in the past.

If you have any photos, we are happy to scan and return the originals.

Please contact Helen, details on front page, if you have any that you want to share in future editions

HeatMaster

UK LTD

Industrial & Domestic Heating Services
 Gas • LPG • Oil Heating Systems

T: 01638 712 400 • M: 07973 372 945

E: heatmasterukltd@hotmail.co.uk




**Posh
Petals**

Flowers Professionally Designed
 For Every Occasion

Carol Bentley - 01638 510829 Mobile: - 07833 610181
 Wendy Farrell - 01638 713403 Mobile: - 07870 106175
 www.poshpetalswestrow.co.uk • poshpetals@sarahjade.co.uk
 Sycamore House, Eldo Road, West Row, Suffolk IP28 8PY

KATHERINE CHEESMAN
Psychic Medium & Reiki Healer



I am a Psychic Medium, based in West Row. I specialise in Readings and Reiki Healing. Spiritual guidance and healing can help to give you strength, clarity and harmony within yourself.

<i>Readings</i>	<i>Reiki</i>
Audio Recorded Readings	1 hour or 30 minute Reiki for Adults
Video/Phone Readings	Distant/Absent Reiki
Face to Face Readings	30 minute Reiki for Children
Spirit/Evidential Readings	


www.katherinecheesmanmedium.com
 07795364714
 katcheesmanart@gmail.com

BN
 ELECTRICAL

Ben Norman
M: 07540 052844

INSTALLATIONS & REPAIRS

Trelowen, Cooks Drive,
 West Row, Suffolk IP28 8QL



WEST ROW VILLAGE HALL FOUNDATION

Chapel Road, West Row, IP28 8NY

Registered Charity No. 1165959

To Hire the Hall

Call Vicki Butler on 01638 716924 mob 07704 693 706

Check out our website <https://westrowvillagehall.co.uk/>

or visit us

<https://www.facebook.com/westrowvillagehall/>

West Row Village Hall offers a wealth of classes for sport, exercise and dance every week for all ages and abilities.

Sunday: 6:30pm – Kuk Sol Won, a martial arts training programme to children and adults of all ages.

Martial Arts with Darren Hart mob 07717 886 917

Monday; from 4.30 until 7.30pm: PWL (Performance Without Limits) offers dance/acro classes for children of all ages. Mob 07510 611 231

Tuesday offers an evening class of Fitness Pilates run by experienced Health & Fitness Instructor Karen Peachey-Gallagher .Mob 07554 119 550

Thursday Evening: 6pm – 6:45pm a Fun Step Aerobics class with all equipment provided and for all ages and abilities.

Thursday Evening from 7.30pm till 9.30pm: Linday Hop, Swing Jive Open to all adults. Caroline 07886 492 772, Dale 07399 776 994

Friday: 2nd Friday and Last Friday of each month: from 12:30pm. Warm Rooms Fish and Chip lunch. Contact Sharon (Parish Clerk) to reserve a place, alternatively turn up for Soup and hot drink.

Friday 6:30pm : 5:30–7:30 pm Kuk Sol Won – same as Sunday

To book the hall: £15 per hour (Residents of the Parish of West Row

£18 per hour – Non residents

Extra charge for Bar and Sun-Lounge



102 Church Road, West Row, Suffolk IP28 8PF

T: 01638 715857

M: 07917 082903 or 07917 082906

DESIGN & BUILD ELECTRICAL ENGINEERS & CONTRACTORS

DOMESTIC - INDUSTRIAL - COMMERCIAL - AGRICULTURAL

PERIODIC TESTING & INSPECTING

P.A.T. TESTING

TEMPORARY SITE ELECTRICS (FOR HIRE)



KL CYCLES

CYCLE REPAIRS SERVICING & ACCESSORIES

1 Fifty Farm, Chairfen Drove, West Row IP28 8QT

E: klcyclesmildenhall@gmail.com

www.klcycles.co.uk

T: 01638 476095

Find us on instagram and Facebook search KL Cycles



FROM THE HISTORY GROUP

Anglo Saxon Suffolk

The Roman armies withdrew from Britain early in the fifth century because they were needed back home to defend the crumbling centre of the Empire. Britain was considered a far-flung outpost of little value. At this time, the Jutes and the Frisians from Denmark were also settling in the British Isles, but the Anglo-Saxon settlers were effectively their own masters in a new land and they did little to keep the legacy of the Romans alive. They replaced the Roman stone buildings with their own wooden ones, and spoke their own language, which gave rise to the English spoken today. The Anglo-Saxons also brought their own religious beliefs, but the arrival of Saint Augustine in 597 converted most of the country to Christianity.

The Anglo-Saxon period lasted for 600 years, from 410 to 1066, and in that time Britain's political landscape underwent many changes. The early settlers kept to small tribal groups, forming kingdoms and sub-kingdoms. By the ninth century, the country was divided into four kingdoms - Northumbria, Mercia, East Anglia and Wessex. Most of the information we have about the Anglo-Saxons comes from the Anglo-Saxon Chronicle, a year-by-year account of all the major events of the time. Among other things it describes the rise and fall of the bishops and kings and the important battles of the period. It begins with the story of Hengist and Horsa in AD 449.

It's safe to say that Suffolk was shaped by the Anglo Saxons during their time here in the dark ages. The very name East Anglia is a version of 'the land of the East Angles'. Originally owned by the Icenii tribe, most famously known for their warrior queen Boudicca. The Anglo-Saxon era came from an invasion into Britain from several Germanic lands (now modern Germany), most predominantly the Angles and Saxons. The Angles happened to settle in East Anglia.

England was sectioned into individual kingdoms, each with its own ruler and set of laws. East Anglia was its own kingdom, alongside the Kingdoms of Essex and Mercia (now the Midlands). It is believed that the Angles in the Kingdom of East Anglia sectioned themselves into the North folk (modern day Norfolk) and the South folk (modern day Suffolk).

They had great trade links with Europe and many from the rest of England would travel to East Anglia to buy treasures from Europe. They spoke Old English and, according to historians Kortmann and Schneider, because they were the first known Germanic settlers in England, East Anglia can claim to be the first place in the world where English, as we know it, was spoken.

Two Anglo-Saxon burial mounds from the 6th and 7th centuries were discovered in 1938. As far as Anglo-Saxon archaeology goes, this is one of the most extraordinary and fascinating pieces of archaeological evidence we have about the lives, religion, wealth, and practices of the Anglo-Saxons. The burial mounds were traditional pagan burials of important people in the community. They were buried with grave goods - combs, tweezers, brooches, weapons, and sacrificed animals.

Elsewhere in Suffolk, Anglo-Saxon remains and influences can be seen at the West Stow Anglo-Saxon Village. This archaeological site was once the site of an early Anglo-Saxon village, and was occupied between 420 and 650 AD. Historians began excavating there in 1849, after a neighbouring Anglo-Saxon cemetery was found. Following this, pottery kilns from Roman Britain were discovered before an Anglo-Saxon settlement was uncovered.

Unlike West Stow, Sutton Hoo and Snape, very little if anything is known about Anglo Saxon West Row. It had certainly shrunk in size compared to its Roman counterpart. The villas made way for wattle and daub huts yet the agriculture remained. There is evidence of a Saxon cemetery along the river near Judes Ferry, exhibiting the new Pagan beliefs of the invaders, brooches, pottery and beads have all been found scattered throughout the village, indicating at least some form of settlement within the area and even trade, with various coins from the era being found.

In 865, East Anglia was invaded by the Danish Great Heathen Army. This army was enormous and heavily violent. They invaded the whole of England with their longboats and axes until many of the Saxon lands were under their control, which became known as the Danelaw. Unfortunately, East Anglia was also sucked into this territory. In 917, Danish control in East Anglia suddenly collapsed after numerous defeats in Northumbria and Essex. After the Danish retreat, East Anglia was absorbed into the new and united Kingdom of England which would now have one king and one seat of power and East Anglia became an earldom.

Anglo-Saxon rule came to an end in 1066, soon after the death of Edward the Confessor, who had no heir. He had supposedly willed the kingdom to William of Normandy, but also seemed to favour Harold Godwinson as his successor. Harold was crowned king immediately after Edward died, but he failed in his attempt to defend his crown, when William and an invading army crossed the Channel from France to claim it for himself. Harold was defeated by the Normans at the Battle of Hastings in October 1066, and thus a new era was ushered in.



A C Stevens Engineering



Garden Machinery Repairs & Servicing
Quads - Motorbikes - Generators - Bicycles

Welding and Metal Fabrication

Collection and delivery service available

Fast and reliable service

Contact Andy on 07850 356555

or 01638 715875

acstevensengineering@gmail.com

www.acstevensengineering.co.uk



AllTime Alarm Solutions Ltd



Fire



access



electrical



security

AllTime Alarm Solutions are a local company who install the latest Burglar, Security and Fire alarm systems to suit your budget, ensuring your home, family or business premises are safe and secure.

Call or email for a Free no obligation quotation!

T: 01638 515750

E: info@alltimealarmsolutions.co.uk

W: alltimealarmsolutions.co.uk



A salon experience in the comfort of my own home

7 Years experience

Toni & Guy trained

HAIR CUT ~ BLOW DRY ~ HAIR COLOUR ~ HAIR TREATMENTS

Appointment's Only

Trained in Olaplex services and Brazilian Blowdrys

Specialises in Balayage and creative colours

Loyalty card discount available

Contact: Jenna 07538 872860

2 John Walter Drive, West Row, IP288WZ



Or find us on Facebook

MILDENHALL BUTCHERS

Traditional Family Butcher

Tel: 01638 712248

10 High St, Mildenhall, Bury St Edmunds. IP28 7EQ

OPENING TIMES

Monday - Saturday

7.00am - 5.00pm

Sunday - Closed

**Customer car park available
behind the shop.**



Find us on Facebook



- SERVICING • TYRES • AIR CON
- EXHAUSTS • DIAGNOSTICS
- WHEEL ALIGNMENT • BODY REPAIRS

Collection & Delivery available

Unit 2 Harlequin Business Park, Kenny Hill, Suffolk, IP28 8DS.

call us now for best prices 01353 675000 • www.candlmotortech.com

Kenny Hill
Test CENTRE
MOT TESTING
£49
FREE RETEST IF REQUIRED
CALL OR BOOK ONLINE @
kennyhilltestcentre.co.uk

**OVER 50 YEARS
EXPERIENCE**

NEWS FROM YOUR COUNCILLORS AND COMMUNITY OFFICERS



District Councillor Mick Bradshaw
Mick.bradshaw@westsuffolk.gov.uk



District Councillor Don Waldron
Don.waldron@westsuffolk.gov.uk
See report below



Colin Noble
Suffolk County Council Councillor for Row Heath
Division
Tel : 07545 423795
Email; colin.noble@suffolk.gov.uk
See report below



Youth Worker/Director and Researcher
Jordon Millward BSC, MSC
Call 07771 621038
Email: jkmillward@askjordon.co.uk
See report below

Hello There

In this fast-paced world, I understand the importance of guidance, growth, and maintaining your well-being. That's why we're excited to share valuable resources and opportunities to help you confidently navigate your career path.

Career Advice: Looking to make informed decisions? Discover your passions, develop essential skills, or discuss what you want to do with your next step.

Professional and Academic Opportunities: Expand your horizons with diverse new possibilities for either a career change or to help your children discover a placement, internship or experience to define their early career. These experiences will enhance your knowledge, skills, and network from academic societies, STEMMB start-up support or cultural discovery. Shared regularly to help support college and university students in Suffolk <https://www.facebook.com/groups/536662707075700>.

Mental Health Support: Prioritising your well-being is crucial. Find resources and support to help you thrive mentally, even in demanding times. Strike a healthy work-life balance and develop resilience on your path to success.

Discover Tips and Resources: Dive into a treasure trove of knowledge and insights from my regular newsletter. Explore education and research tips, personal growth strategies, and more to make informed decisions and excel in your chosen field. <https://askjordon.substack.com/>

Email Me: Have specific questions or need personalised advice? Reach out at jkmillward@askjordon.co.uk.



These are all things I do for my students anyway but that may benefit those in the parish.

Best Regards,
Jordon Millward *BSc, MSc*
Director and Researcher

Thank you for reading this article in the great Parish Magazine.

Previously Lance Stanbury wrote a regular article, and the editor has asked if I would like to contribute, and I am pleased to do so. I am the County Councillor for Row Heath Division on Suffolk County Council and have been honoured to represent the village for several years. I know West Row well and have lived in the area all my life.

Over that period, I have worked on many projects in the village and had some notable success, such as the Bridalway, cycle, and walking route to Mildenhall. I have been so pleased to see the improvements to the village, and I have been very supportive of the Shed Project and continue to work with the Parish Council on such things as upgrades to the footpaths.

At the county council, I consistently make the case to keep Council Tax as low as possible, respecting Council Tax is your hard-earned money and seeking improvements to everything from Child Protection Services, how we support older people in our community to repairing our roads.

We recently announced a further £10M investment in repairing our roads, and through the highways reporting tool, we aim to get these done quicker.

As food, energy, and mortgage costs rise, there is help with the Cost of Living, and it is well worth you seeing what support is available at www.suffolk.gov.uk/CostOfLiving

I am also looking for how to help the village and improve services. As well as deal with problems that might occur with a service provided by Suffolk County Council. So if you have any issues or concerns, you can always call or email me, and I will do my best to help.

Take Care.
Colin Noble,

Not much to report at the moment, as we are still working out who does what. I am chasing the grass cutting at the moment.

Hopefully more next time
District Councillor Don Waldron

PARISH NEWS

ELECTIONS: seems a long time ago but the previous Parish Echo edition came out before the results were announced. Your Parish Councillors were returned unopposed. The District Councillors for The Rows (West Row, Beck Row, Holywell Row and Kenny Hill) are D/Cllr Bradshaw and D/Cllr Waldron. We look forward to hearing from our District Councillors how they propose to improve the Health and Well-Being of the Parish residents.



WEST ROW COMMUNITY CHOIR: Meets Monday evenings at the Bowls Club, 6pm. Contact Gaynor Fisher, churchmaiden@btinternet.com

TREES: here is a link if your group has a need to plant trees
<https://funding.idoxopen4community.co.uk/suffolk/News/View/International-Tree-Foundation-Accepting-Applications-for-Tree-Planting-Projects-Across-UK-GRUKBP3!N76970>

PARISH ANNUAL ASSEMBLY: was held in May. Some residents attended and brought positive suggestions with them. We recommend attendance at PC meetings to keep abreast of Parish topics, ie . Beeches Road development and other matters residents are concerned about. A relevant topic headed up by Jordan Millward was: *“How can we engage with our young residents?”*. Options included obtaining Gaming software and feasibility of WiFi. Investigating using West Row Academy facilities for young group activities. 2024 Sports Tournament (football, cricket, rounders, bowls taster). Ways to secure the services of a Youth Worker/Facilitator and related grants were also discussed. *If anyone has ideas – please bring them to the Parish Clerk.*

PARISH LAND: We are making steady progress towards securing our own Cemetery on land off Chapel Road, led by Cllr Peachey who has worked tirelessly to secure this much needed space, plus other facilities such as more Public Footpaths. Confirmation will be made public as soon as we know it is officially our Parish asset.

MINUTES of each Parish Council meeting are published on our Parish website once approved in Council: <https://www.westrowparish.org.uk/>. *Members of the public are welcome to observe any meeting. If you have questions for your District Councillors they are invited to attend each monthly meeting, the next being on Wednesday 21st June.*

DATE FOR THE FUTURE: We are discussing how the 80th Anniversary of the cessation of WWII can be commemorated in **May 2025**. Long way off but the best plans are made well ahead of time. So put your thinking caps on and feed in any ideas.

FINALLY: It has been suggested that we undertake a survey of what our parishioners would like. So a survey has been devised with a view to obtaining feedback which we can work on. Please complete and return to aid our future planning of events, etc.
Please see back page for survey

Rosalind Hamill, Chair

STOP PRESS:

What are your thoughts on us running a Sport's Tournament August 2024?



RINGING THE CHANGES FROM OUR USUAL REPORT. THIS EDITION FOCUSES ON:- OUR HISTORY:

Even after more than 5 years, people still ask: “What is The Shed all about ?”

The seed was set (pardon the pun) many years ago where I dealt with service personnel being Medically Discharged, including those with sustained injuries and PTSD. The option then was for a few weeks “recovery” at a place many miles away from their home where a resource was to work in their gardens.



It is generally understood that gardening is a great stress reliever, you can get lost in thought whilst weeding. But there was no such facility in our area. Especially the far reaches of West Suffolk where most support is centred



around Ipswich and the east side of the County.

With perseverance Suffolk County Council agreed to lease a plot of land for our Community Garden and in October 2016 we agreed to adopting the “field” and in February 2017 “The Shed”

was formalised with a legal

Constitution and registration as a charity And so the labour of love began. We literally found two buildings hidden under years of ivy growth, shrubs, trees and dirt. The ivy had grown inside the Stables, through the wooden walls and into the tiles. Painstakingly we removed it by hand and over the years turned the derelict buildings into practical facilities. We now have a fitted kitchen, Tea Rooms, storage for our Food Bank and patio for socialising.



We have **Little Shed** at our front gate which houses our surplus food for distribution to those who are struggling. Donations are put towards our running costs, insurance, electricity, petrol, plants, seeds and endless paint and maintenance materials.

Thank you Dave for the lovely new shelving

We also deliver weekly care packages to nearly 20 families recommended to us.



Little Shed is open 24 x 7. Most of our clientele appreciate the supplies, but as always with honesty boxes, some are less honest than the majority, forcing us to install CCTV. We also face the gauntlet of mis-communication and rumour control. We urge people to visit, ask questions and most of all, get the facts from the horse’s mouth rather than the unreliable bush telegraph.

On a more positive note: We have established Vegetable and Fruit sections, a Herb Garden, Orchard, Shrubs, two ponds and the Bug Corner together with a Hedgehog Hotel.

Our centre piece is the **Big Circle**: Months of preparation involved removing dozens and dozens of invasive Mellow plants, Buddleia and endless stones. It was finally ploughed, raked, trodden on and grass seed set just in time for a rainy spell which did it a world of good.



We now have a recreational space for any Parish resident to book (FREE) for family events, ie birthday parties, etc. The Shed is a registered charity and soon to be a registered Community Asset. Almost everything you see has been kindly donated or purchased from grants. All that we acquire is given back to the community. We rely on volunteers to help with everything we aim to do and they do so willingly, frequently spending their own money to make sure The Shed is supporting those more in need than ourselves.

Covid hit us just as we were establishing links with local Mental Health organisations and ex-service groups who we encourage to come along, see what we can offer, even it is only tea and a biscuit.

We meet every Tuesday, Thursday and Saturday from 10am until we have worked enough. Some volunteers come along other times which suit them best.

You do not have to be a gardener to visit. We have volunteers who maintain our facilities, painting, woodwork, DIY, fixing and repairing.

We have many projects in the pipeline: another greenhouse to be erected, another shed for storage, plus completion of a Disabled Toilet..... then we’ll have a rest !!!!!

Finally, we have so many people to thank for our continued success and support to the community near and far. These unsung heroes have championed our cause through thick and thin.

We thank you one and all Thank you.

FMI: email theshedcharity@gmail.com or Tel: 01638 715329

Rothwell's

Carpet & Stone Floor Cleaning

**CARPET CLEANING & STONE
FLOOR, UPHOLSTERY, RUGS**

Telephone:

01638 428060

www.Rothwells.biz

A few points that make us stand out.

We're an honest local family firm,
and have been in business since 1993.

Our large truck mounted machines mean
more cleaning and drying power
for the best results possible.

Members of both the NCCA & TACCA

We will move the furniture • 100% satisfaction or it's FREE.

Call Oliver or Max Campbell for expert help today.



Southview Supplies

Stockist of CSJ K9

Specialist Canine Feeds, based in West Row

www.southviewsupplies.co.uk



- ◆ Natural Dry Dog feeds for all types of working and pet dogs.
- ◆ Range includes Wheat and Gluten Free, Rice Free and Grain Free.
- ◆ Great Quality and Value.
- ◆ All ages catered for.
- ◆ Great Range Natural Herbal Supplements.
- ◆ Free Feed Samples available on request.
- ◆ Range of Skin Cream, Shampoo and Flea Spray.
- ◆ **Filly No Mates!** Natural Herbal Fly, Lice, Mite and Tick repellent for Horses and Ponies.

07776 188548 or 01638715875 ◆ alana.southviewsupplies@gmail.com

Follow me on facebook Southview Supplies

WEST ROW BOWLS CLUB NEWS

The Club's Outdoor season, so far, has resulted in a fairly even mixture of wins and losses. In all competitive leagues the Club plays in, each side is in the top half of its league.

The Club's team strip and club badge has been changed, sponsored by EJP Building Services, Mildenhall.

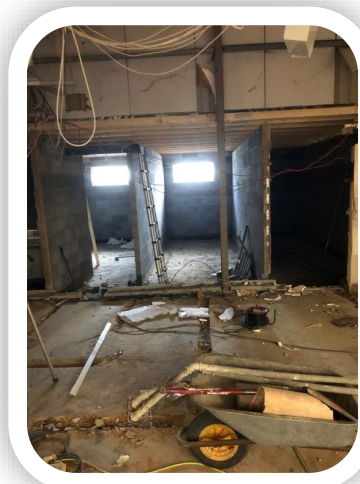
Below is the Ely & District Team in the new kit, before their match against Soham B



New members have been selected for various teams and have performed well under the guidance of more experienced players.

It's never too late to try out the sport of bowls and regular coaching sessions are available on Wednesday evenings from 6.00 p.m. onwards. As a reminder anyone can apply for Social membership of the Club. This membership entitles you to use the bar facilities when the Club is open and also take part in the many social activities that take place e.g. monthly Bingo evenings, dances, barbecues and other social activities.

The Indoor building has undergone major changes with an extension comprising of a new changing room, toilet facilities, kitchen, cellar, redesigned bar and other storage areas.



Many members have volunteered on various occasions to help demolish internal walls, remove a suspended ceiling and carry out other manual tasks. At the time of writing the extension is now water tight and 'new' floors have been screeded up to match the existing floor level. Plasterboard is soon to be put up on the walls and further members' voluntary help will be needed for constructing stud walls and redecorating.



The Indoor section of the Club is also seeking new teams to enter the Morning League, Evening Triples League and Aussie pairs League, beginning in September. Any one interested in entering a team should make contact as detailed below

For information regarding any aspect of the Club please contact Club Coach, Peter Rolfe, tel: 01638 714073 or email:

peter.rolfe3@btopenworld.com



THE BOWLS CLUB HAVE FOR SALE

**20 CHAIRS AT £10.00 EACH
AND 4 TABLES AT £3.00
EACH**

**CONTACT Peter Rolfe, tel:
01638 714073**



alan8358@hotmail.com

Alan Wisbeach

PAINTER & DECORATOR
Internal and External Work



Professional
Conscientious
Reliable
Recommended



01638 429976
07722617430

www.alanwisbeach-decorating.co.uk

**THE WILLOWS
CAMPSITE**



Gas Cylinder Stocklist

Hurdle Drove, West Row, Suffolk IP28 8RB

Call Lee on 07775 725006

www.thewillowscampsite.co.uk



Kitchens, Bathrooms, Carpentry

E: mcpamps@gmail.com

T: 07961 584839

All those 'can you just' jobs!!



**A'n'I
LANDSCAPING
FENCING
TREE SURGERY**

Contact:

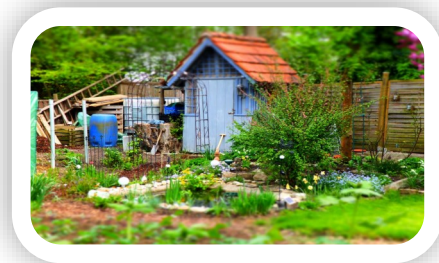
Antony 07769 680761

Ian 07748 731864

Email: anifencing@btinternet.com

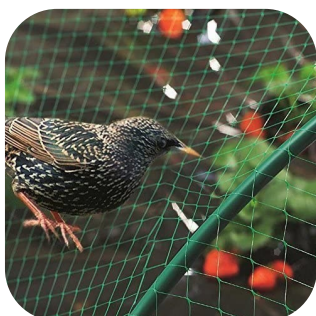


AROUND THE ALLOTMENTS IN JULY AND AUGUST



The summer months have finally arrived and hopefully we are experiencing some nice warm weather and good growing conditions for allotments and gardens.

Strawberries and soft fruits such as raspberries and gooseberries should be cropping well and it's a good idea to keep them netted for some protection against birds. Keeping vegetables well-watered will help to promote good growth, healthy plants and well-laden crops.



Now is the time to set crops such as winter cabbages and winter greens ready for harvesting in the colder months. Netting the small plants will help to limit damage by pigeons and other pests until the plants have time to get established. It's a good idea to maintain regular cleaning and weeding of the allotment or garden which will not only help the plants grow stronger and healthier but will also help to keep pests such as slugs and snails at bay.

Keep a close eye out for potato blight which can also spread to tomato plants as they are in the same family. If you do find potato blight it is best to dig up and dispose of the infected plants to try and stem the disease before it spreads. More detailed information and images of plants with potato blight can be found at <https://www.rhs.org.uk/disease/potato-blight>.

By mid-July to August, it should be time to harvest crops such as sweetcorn, runner beans and French/dwarf beans along with courgettes and marrows. Salad veg such as lettuce, cucumber, radishes, tomatoes and beetroot should also be cropping well, ready for tasty summer salads.



Lots of helpful information for growing fruit and veg along with advice for dealing with pests and diseases can be found at websites sites such as The National Allotment Society - www.nsalg.org.uk and The Royal Horticultural Society - <https://www.rhs.org.uk/> and www.ukgardening.co.uk
Wishing everyone a lovely, sunny summer.

St Peter's Church West Row



CONTACTS:

Team Vicar: Rev'd David Butcher

Tel.: 07747 816 038

Email: revdavidbutcher@gmail.com

Other priests serving at St Peter's:

Rev'd Gordon Anderson and

Rev'd Gill Anderson

Churchwardens: Beryl Austin 01638 712708 - Debbie Eaglen

Elders: Tricia Leverington - David Sennitt

Friends

I wasn't sure whether I should have put the heading for this article in quotation marks as many people will immediately think of the American series when the words "Friends" is used! But clearly that word has far more usage and meaning than just that portrayed in the American television series. We still use the phrase "we have been friends for years" to refer to people we have known for years, some of whom may indeed be true long-term friends but many others are just people we have known in the past. We get "friend" requests on social media. Sadly, we often view these with some scepticism nowadays as peoples accounts get hacked and we don't know whether the request is genuine! We also hear on social media "you know who your true friends are" when people are struggling or are in some other difficulties and those they thought were friends seem to disappear.

A true friend is indeed somebody who sticks with you through thick and thin. They may be the first person to tell you when you have got something seriously wrong and helps you to make amends and seek to put things right. They will walk with you through the difficulties.

One of the hymns that we use occasionally starts with the words, "What a friend we have in Jesus". We don't use it very often now as it can seem a bit Twee to modern tastes but it does convey what we as Christians believe that Jesus is a true friend to those who follow him. In words from St John's Gospel, Jesus says, "No one has greater love than this, to lay down one's life for one's friends. You are my friends if you do what I command you".

May you know Jesus as your friend, a true friend who will never desert you!

Rev'd David Everett

DATES FOR YOUR DIARY

St. Peters Church

St Peter's Day Celebration service 11 O'Clock

2nd July

followed by a B.B.Q

Come and Have Lunch in St. Peters Church Hall

12 O'Clock

Tuesday 4th July and Tuesday 1st August

LYNN MICHELLE MORLEY – ONE SPECIAL LADY

8th JULY 1957 to 24th APRIL 2023

We can not let this edition of the Echo go out without mentioning Lynn.

Lynn started and compiled the Echo for many years, only handing over the reins when the Parish took over.

The Echo was always gratefully received by new and old villagers as a great source of information and introduction to the village.

Lynn had the village running through her veins, she would do anything for anybody and was always first to put her name down to help with Summer Fetes,

Village clean ups, you name it she was always there.

The saying is that nobody is irreplaceable but in Lynn's case, they certainly broke the mould when they made her, she can never be replaced, she leaves very big shoes to fill.

I am sure that you all will join us in offering our condolences to Lynn's husband Graham, Sons Gary & Steven and all her Family.

RIP LYNN



CORONATION BIG PICNIC - 6th MAY 2023

Although the weather was not kind, the rain started at 1 p.m. and didn't let up all day and evening, but it seems that a good time was still had by all, from the fish and chip supper, to the Bar-b-Que, Cakes and Teas, egg throwing competition, the lighting of the Beacon, the Community choir with their rendition of the old faithfals and not forgetting the party tent, dancing in the rain to Aaron Bolton and the disco.



Few Photos from the Day



The WESTROVIAN part 3

Here are a couple of further articles published in the parish magazine in 1932.

The first article gives an insight into what children experienced when going to school 100 years + ago. Compared to today, it was a challenging experience for all ages of children, with little or no parental accompaniment.

The School Van

The Chapel and School started by Edward Wells in the Old Barn, which lay close to the river Lark in Isleham Fen, Cambridgeshire, was the only source of schooling for the fen children in the mid 1800's. Edward's concern for all of their needs found him rounding up many of them to place them in the temporary care of the Ely poor house to escape the ravages of a fierce winter. The Barn continued as Chapel and School until a purpose-built Chapel was afforded in 1872.

In this same year the foundation stone for a new church school was laid at a site beside the river a mile downstream. The Fen children could now receive a more formal education. Without roads, the Welles from Windy Hall and the other children, would wind a precarious three mile rout beside deep ditches (sometimes crossing them by a log or a narrow plank) and then along the river bank to School.

When Edward's nephew, Elijah, was appointed engineer to the Mildenhall Fen Commissioners in 1891, he moved with his family across the river to the Toll House in Suffolk. Because there was no Suffolk School any where near, the children were allowed to continue at the Isleham Fen School. The Headmaster, Mr. William Quinn, brought them across the river in his punt.



By 1906, the number of families living in West Row Fen warranted the building of a separate School. The timber and corrugated iron School nestled under the Suffolk bank of the River at the end of Fodder Fen Drove. Elijah's children now walked along the Suffolk bank to receive a sound education under Emma Clarke and Fanny Flack.

The little tin School flourished until the 1920's when it was decided that the West Row Fen children would be picked up by a horse drawn van and taken to the Council School in West Row. Mr. Jack Ingle sat up in his World War 1 van and guided the two horses down the Fodder Fen Drove to pick up the Clarkes, the Porters the Welles and Mary Quinn. Others joined along Cook's Drove and at Hayland Drove we squeezed up along the wooden side seats and central form to make room for the Taylors and the Peachys as we bounced and rocked to School.

If you have any further information regarding family relatives mentioned, including photographs, the ECHO compilers would be interested to hear from you.

Obviously this article was submitted by schoolchildren at the time and the ECHO compilers would like to hear from any children living in West Row who may wish to write an article regarding their favourite things at school in present times.

The WESTROVIAN part 3 continued

Nearly all the girls like leatherwork afternoon to arrive. Every week we ourselves count for the day to come because we like to make useful things and we are proud to take the things we have made, home to our folk.

Leatherwork in School – by E. Hudson & R. Peachey

Leatherwork is a fresh subject started in West Row School. It is done by the girls in standards six and seven.

The articles that are made are: Egg cosies which are of various colours, red orange, green and blue.

Purses in green and blue.

Handbags, with zip fasteners are made with the colours brown and green.

Calendars are made in green, pink, orange, blue and grey leather.

Comb-cases are made in blue, brown, green, orange and pink.

Glasses cases for hand bags are made in brown green and blue.

Indoor slippers are made in pink or red.

Nearly all the girls like leatherwork afternoon to arrive. Every week we ourselves count for the day to come because we like to make useful things and we are proud to take the things we have made, home to our folk.

Obviously this article was submitted by schoolchildren at the time and the ECHO compilers would like to hear from any children living in West Row who may wish to write an article regarding their favourite things at school in present times.

Congratulations to David and Megan Barber on their 60th Wedding Anniversary 20th July 1963

Megan and David were married 60 years ago at the Baptist Chapel in West Row
Megan has lived all her life down the Green in West Row, David moved across the border from
Soham Cambridgeshire

All the family send their love and congratulations



If you have a special occasion or birthday that you would like included, in the next issue that covers September and October, then please contact Helen Webber, details on the front cover.



West Row Baptist Church

From the Pastor's Desk

evan@westrowbaptistchurch.org.uk



The pictures we are getting from Ukraine of the devastation caused to the southern Kherson region by floods after the breach of the Kakhovka dam are heartbreaking. So many people have lost everything and surely our hearts must go out to all those caught up in the carnage and to those who have lost loved ones? Yet, it is also heartening to see and hear about all those who have been rescued and who are now once again on dry land.

God's Word, the Bible, informs us of the devastation caused by a far greater deluge that affected the whole of the world about six thousand years ago. It was a flood of judgement in which only eight people survived! We are told in the Bible that God, "*saw that the wickedness of man was great in all the earth, and that every intention of the thoughts of his heart was only evil continually.*" As a result, God brought a world-wide flood upon the earth in which all but eight people drowned. God spared Noah and his family by telling them to build an ark in which they would be kept safe. Noah did not deserve God's kindness and yet God was gracious and saved him and his family and promised never to destroy the whole world in a flood ever again. As a reminder of His promise, God put the rainbow in the sky and each time you see it, it should remind you of God's judgement but also His grace.

The God of Noah's time is the God of our time too. He is perfect and He is still angered by our sin. Just as he warned the inhabitants of the world in Noah's time that judgement was coming and they needed to repent, He warns us of the same thing today too. A final judgement is coming! But, because God is the same, yesterday, today and forever, He is also still gracious and has revealed how sinners can escape that coming judgement. Just like He provided an ark so that Noah and his family would be kept safe, He has provided an "ark" for sinners today too. That ark is not a boat but a person. It is the Lord Jesus Christ. The Bible tells us in Romans 10:13, "*For everyone who calls on the name of the Lord will be saved.*"

To "call on the name of the Lord" means that you must repent of your sin, you must tell God you are sorry for all the bad things you have done to offend Him and you must trust in Jesus to save you from your sin and its eternal consequences. This Jesus did by dying on the cross and there bearing the punishment of God for the sin of all those who would ever come to trust in Him.

Jesus is the only one who can save you from the judgement that is coming. The Bible says, "*believe in the Lord Jesus, and you will be saved.*" This salvation is an eternal one ... not a temporary one like those being rescued from the Kherson floods in the Ukraine at the moment. Believe in the Lord Jesus now and you will be saved for all eternity. What could be better than that? God tells us in the Bible in Revelation 21:4 that, "*He will wipe away every tear from their eyes, and death shall be no more, neither shall there be mourning, nor crying, nor pain any more, for the former things have passed away.*"

I hope you will have a great summer break and that you will think seriously where you stand with God today. Please also spare a thought for those in the Ukraine who are experiencing such unbelievable difficulties. Many are seeking after the Lord and I trust you will too.

Evan

Jesus said, "I am the way, the truth and the life." John 14 v 6

FENLAND SHOW

Adult £5.00
Children Free

Cars, Motor Bikes and Vintage Vehicles

Monday 28th August 2023

10 - 4pm

Motor Cross Track & Stadium

Haylands Drive, West Row IP28 8QU

Side Show & attractions

Stall Traders

For more details call 07796 772964

 Fenlandshow




BINGO NIGHT WITH MERV

Back at
West Row Bowls Club
Saturday
30th
September
7:00-7:30PM

GREAT PRIZES! FUN FOR ALL!

Please bring your own drink
limited bar available

for more details - Ring 01842 861618

Made with PosterMyWall.com

The Parish Echo editorial team takes no responsibility for endorsements of, or statements made in published adverts which are accepted in good faith. However, we reserve the right to refuse any advertisement, article, or item that we feel is considered inappropriate for publication.

Are you looking for a career *WITH NEW PERSPECTIVE?*

Scan the QR code to get started!



These benefits could have you dancing for joy at your new job!

- Annual leave (up to 30 days) • UK bank holidays
 - Paid sick leave
 - Various pay schedules dependent upon position
 - Overtime available*
 - Flexible working options*
 - Pension scheme
 - Life assurance scheme
 - Free Employee Assistance Program (EAP)*
 - Free on-site parking
 - Free specialized training provided*
 - Development opportunities available
 - Time off, cash and honorary awards, and recognition available for significant contributions and consistent high performance
 - Free access to on-site gym facilities
- *Subject to terms and conditions



- Nursery Assistant • Kitchen Assistant • Janitor • Housekeeper
- Recreation Assistant • Engineer • and MORE!

For more information visit: <https://www.mildenhall.af.mil/About-Us/Fact-Sheets/Display/Article/759963/civilian-personnel-start-your-job-search-here/>

Work as a civilian on RAF Lakenheath to support the United States Air Force.



The 48th Fighter Wing provides worldwide responsive combat airpower and support.



The 48th Fighter Wing – also known as the Liberty Wing – is located at RAF Lakenheath and RAF Feltwell. Consisting of more than 5,000 U.S. military members, over 1,500 British and U.S. civilians, and around 8,500 dependents, it is the largest U.S.-operated Air Force base in the United Kingdom and home to both F-15E and F-35A fighter jets. Current priorities for the 48th Fighter Wing include doubling our F-35A fleet by 2024 and providing balance for our people.

Historically, the 48th FW has been the foundation of USAF's combat capability and remains so today. The Liberty Wing led the El Dorado Canyon raids into Libya in 1996 and was the first F-111 fighter unit to deploy to the Gulf during Operations Desert Shield and Desert Storm. The Liberty Wing also anchored NATO forces during Operations Deliberate Force and Allied Force. Since September 11, 2001, the 48th FW has played a key role in anti-terrorism operations, flying combat missions, and providing combat support in Operations Enduring Freedom and Iraqi Freedom.



SUMMER QUIZ 2023

All answers are towns in the UK

e.g. Sounds as if a banquet has been left untouched? (8) ANS – NUNEATON

1. You need just one of these to see it? (3) ANS.....
2. A famous tea party is associated with its name? (6) ANS.....
3. A warm over garment? (8) ANS.....
4. An odd number of trees? (9) ANS.....
5. A sport played with a 'ball'? (5) ANS.....
6. Early water providers? (5) ANS.....
7. Little worker on the edge? (6) ANS.....
8. Used by knappers? (5) ANS.....
9. An earl's edible invention? (8) ANS.....
10. Sounds like you can go for this in a car or on a horse? ANS.....
11. Not just quite the same as where the film stars are? (8) ANS.....
12. Bear this in mind for children in need? (6) ANS.....
13. Sounds as if you'll find these on some farms? (5) ANS.....
14. A small place for ships? (10) ANS.....
15. Combine two things found on the head? (8) ANS.....
16. A cockney hairdo? (6) ANS.....
17. Sounds like a burial place? (5) ANS.....
18. Could be a swimmer sentry? (9) ANS.....
19. Sounds like most foodstuffs left to the elements will form this? (4) ANS.....
20. Internet Provider change – not quite? (7) ANS.....

NAME OF ENTRANT.....

ADDRESS.....

Contact tel. no.....

**PLEASE LEAVE YOUR ENTRY AT THE VILLAGE STORES BY
16th. JULY 2023 AT THE LATEST
THERE IS ALWAYS A PRIZE AWARDED TO THE WINNER**

From the Bench

AS IT IS CLOSED SEASON A BLAST FROM THE PAST

West Row Football Team, year unknown but thought to be about 1961

Back Row L to R. Arthur Mackender, Arthur Hurst, Terry Reeve, Barrie Taylor, John Martin, Arthur Aves, Roger Bacon, Dolly Bacon.

Front Row L to R. Charlie Hurst, Steven Martin, Robin Taylor-Balls, Raymond Flatt, Warner Webber, Roderick (Titch) Freeman



Whitings
Chartered Accountants **LLP**

Looking for support & guidance
from a local Accountancy firm?

Contact your local Mildenhall office to
arrange your **FREE** initial consultation.

t: 01638 712267

e: mildenhall@whitingsllp.co.uk

w: www.whitingsllp.co.uk

Willow House, 46 St. Andrews Street, Mildenhall, Bury St. Edmunds, Suffolk, IP28 7HB

SERVICES: Audit & Assurance • Business Support • Business Tax • Corporate Finance
General Practice • IT Services • Payroll • Private Client Tax • Probate & Estate
Administration • Start Ups • Tax Enquiry & Investigation Service • Wealth Management

COMMUNITY FEEDBACK: We need to know what you want from us to improve any aspect of living in the Parish. The Parish Council (PC) uses the Precept funds for statutory responsibilities, but we do our best to make small and effective changes. Please have your say about Parish work. This is in addition to the Neighbourhood Plan which is focusing on growth and development. We are looking for ways we can help our residents of all ages. Please bear in mind the Parish Councillors can only

PARISH SURVEY JULY/AUGUST 2023



1. How long have you been a resident?	
2. How many adults in your household ?	
3. Your age groups for each adult (18-25), (26-46), (47-60), (61-75) (over 76)	
4. Do you have children ? Their ages	
5. Are the adults: retired/unemployed/working from home/ work within the Parish/work outside the Parish/stay at home parent/carer ?	
6. Does the Parish Council (PC) meet your needs? Yes/No	
7. If not, why not ?	
8. Did you know the PC meets monthly, 3 rd Wed. 7pm, Church Hall? All residents welcome	
8. How can the PC improve your quality of life ? (please use separate paper if necessary)	
9. Are you prepared to help with a Working Group to resolve issues raised ?	
10. Does any adult in your household use the internet, social media, etc.?	
11. Did you know the Parish has a volunteer group to help, i.e. shopping, prescriptions, food parcels, lifts for appointments, etc. ?	
12. Do you know of the Community Lunches ? St. Peters (1 st Tues.), Baptist Church (3 rd Tues.) Fish Fridays (2 nd and last Friday)	
13. Are you aware of the clubs and groups in the Parish? If so, list those you know of Please use separate sheet it necessary.	
14. Would you attend any of these if a friend or helper went along also ?	
15. If the answer to 11 is No why?	
16. Do you receive a copy of the Parish Echo ?	
17. If not, what is your address ?	
18. Finally, would you be prepared to help with any future event ? (If yes, then please leave contact details)	

Thank you for completing this survey which will help with a positive way forward.
This survey is also on the Parish Website, or email to: westrowpc@gmail.com or send to Sharon, Parish Clerk, Weston Ditch, West Row 07860 358493

